

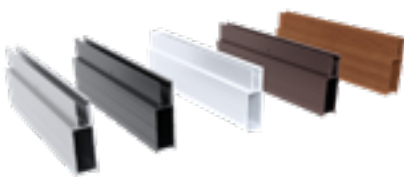
COLOUR

Once you have decided on the type of Invisi-Gard Security Screen you require, you next need to consider the colour.



01

Aluminium Door Frame



Frame colour forms a key component of your window or door design and will need to balance with both the interior and exterior style of your home.

Whether you decide to contrast or blend, choose modern or heritage, or even a timber-grain look, there are a range of colour options for you to choose from.

Alspec is a Registered Powder Coater of Dulux and Akzo Nobel (Interpon).

02

316 Marine Grade Stainless Steel Mesh

Invisi-Gard 316 Marine Grade Stainless Steel Mesh is coated with a *black polyester finish only*. This coating cuts down light reflection allowing clearer visibility and is suitable for outdoor applications.

Some competing systems use hybrid epoxy powder coatings which are completely unsuitable to outdoor environments leading to reduced product longevity. Product strength and performance are key factors in making a purchasing decision.

03

Security Door Hardware

One of the key considerations needed when choosing an Invisi-Gard Security Door colour is the availability of door lock and hinge colours.

Door Locks

Available in plated finishes: Satin Chrome, Bright Chrome, Bright Gold.



Hinges

Available in stainless steel finish or a range of standard powdercoated colours.



Door Closers

Available in a range of standard powdercoated colours.



POPULAR COLOUR RANGE

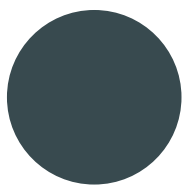
At Invisi-Gard we are always being asked what the top powder coat colours are. To make it easy for consideration with your next project, here is the list of our top 20 Invisi-Gard powder coat colours.

Alspec is a Registered Powder Coater of Dulux and Akzo Nobel (Interpon) and can offer an extensive range of colours all powder coated from our inhouse paintlines.

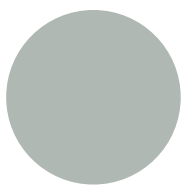


Colour Disclaimer

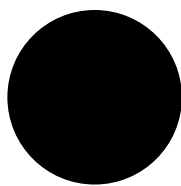
Colour representations in this brochure are for illustrative purposes only. You should request actual samples before placing your order.



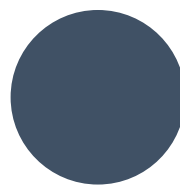
Anodic Dark Grey Matt



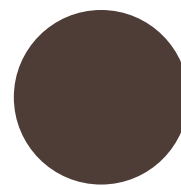
Anodic Natural Matt D1000



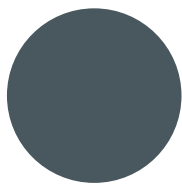
AZ Custom Black



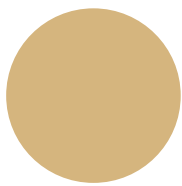
Deep Ocean Matt



Hammersley Brown Satin



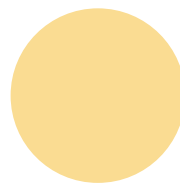
Monument Matt D1000



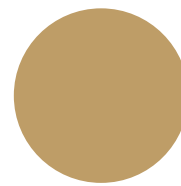
Paperbark Matt D1000



Pearl White Gloss D1000



Primrose Gloss D1000



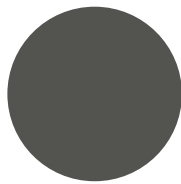
Stone Beige Matt D1000



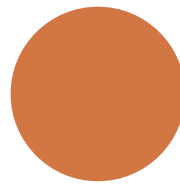
Vivica Ultra Silver Gloss D1000



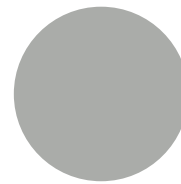
White Birch Gloss R/C



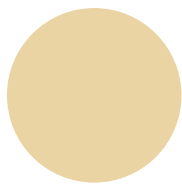
Woodland Grey Matt R/C



Western Red Cedar



A.P.O Grey Satin -021



Dune Satin D1000



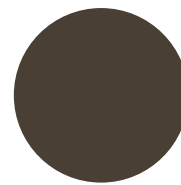
Ultra Silver Gloss



Surfmist Matt

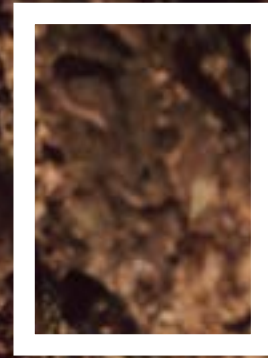


Clear Anodised



Bronze Anodised

TIMBER GRAIN LOOK



Aluminium that looks and feels like timber

The natural beauty and timeless appeal of wood with the capabilities of aluminium.

From traditional warm woody hues to dark modern ashes, Invisi-Gard security screens can be powder coated with the most extensive range inspired from the natural world.

Enjoy the natural beauty of timber combined with the ease and durability of aluminium for a textured woodgrain finish for Invisi-Gard security screens.

Timber grain look is a two-step photo imaging process. First, the aluminium is covered in a luxuriously textured super durable powder coating. Then images of timber grain are sublimated into the powder coating, ensuring absolute photographic precision.



Reasons to have a timber grain look

Beautiful

Just like timber, creates an environment of warmth and style.

Durable

50% more durable than standard powder coating and will never peel or rub off. Unlike timber, aluminium is resistant to termite attack and it will never warp or rot.

Sustainable

No logging, no harmful greenhouse gases from paints and stains and no worries recycling it at the end of its life.

Effortless

No sanding, painting, staining or oiling required. Lightweight aluminium is quick and easy to install.

These days home owners are spending big money on timber entry doors. Now you don't have to compromise on the look of these entry doors. You can add an Invisi-Gard Entry Door in a timber grain look to match.

