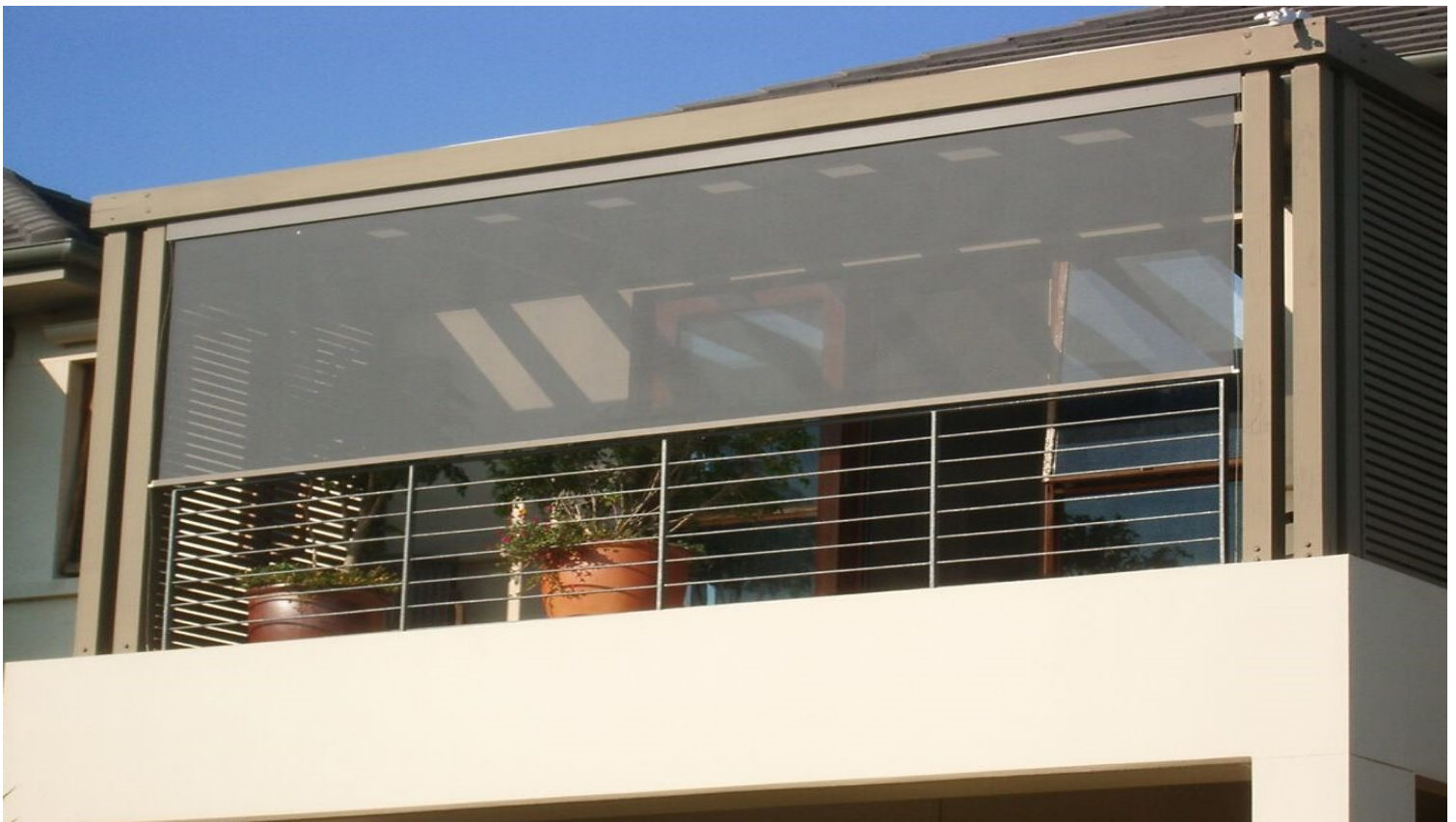


EXTERNAL BLINDS & SCREENS



🔒 5 YEAR WARRANTY

SYSTEMS

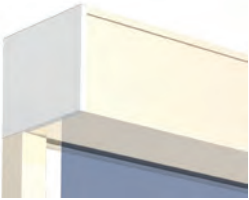
European designed and engineered, External headbox blind systems are built to last. Tough non-corrosive componentry will ensure years of trouble free operation.

Motorising your external blinds enables maximum ease of use and a clean uncluttered aesthetic. Systems can also be linked together on one motor for maximum efficiency.

Choose from the discrete square headbox of the **HM 65 95** and **HM 80 110** systems, or the open systems (no headbox) **HM 80 00 STAINLESS**, and **HM 130 00** which are able to be installed under eaves and can span widths of up to 5.4 metres in one blind.

Heavy-duty yet attractive Helioscreen weighted base bars increase stability in the elements and ensure optimal presentation of the fabric at all times. Choose from sleek aluminium side channels, zip guide channels, marine grade stainless-steel cables or pivot arm model to suit your application.

HEADBOX TYPES



95 x 95mm

Max width 3.2m – Up to 9sqm
(Also available in Pivot Arm Model)



110 x 110mm

Max width 4.4m – Up to 11sqm
(Also available in Pivot Arm Model)

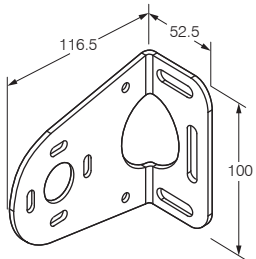


ZIP 110 x 110mm

Max width 4.4m – Up to 12sqm
(Note: height must not exceed 2.8m)

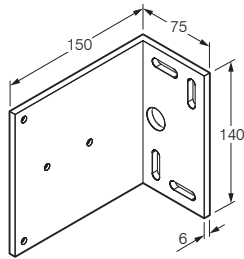
Zip basebar 22x52mm
Adjustable side guides 26x52mm*
with face fix angle 31x52mm*
(*52mm is variable for installation)

OPEN SYSTEMS



HM 80 Stainless

Max width 3.8m – Up to 11sqm
(Also available in Pivot Arm Model)



HM 130 00 System

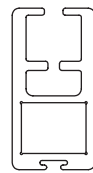
Max width 5.4m – Up to 13sqm

CONTROL

Somfy utilise the latest technology automation, including fully integrated façade management systems that react automatically to the elements. Blinds can be operated simply with a wall switch, a touch panel, or using a remote control.

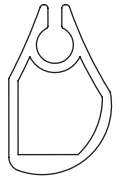


BASEBAR TYPES



Helio

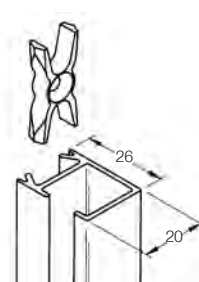
18 x 35mm



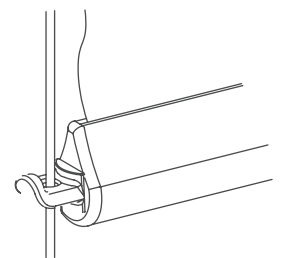
Teardrop

22 x 37mm

SIDE GUIDING



Side Channel



Stainless Cables





External blind systems are suitable in both commercial and domestic applications and come with quality and performance warranties.

FEATURES

- Reduces sun's heat by up to 90%
- Reduces air conditioning costs
- Easy to use, motorised or crank operation
- Sun and wind sensor options
- Stainless steel guide cables or side aluminium channels
- Headboxes to suit architecture
- Open systems available (no headbox)
- Hardware finish: either anodised aluminium or choose from over 150 powder coat colours
- Link blinds together on one motor
- 5 Year warranty

 90% Reduced Heat Radiation

 Windsensor Retractor

 5 Year Warranty

 Powered by Somfy 5-year Motor Warranty

External Screens, Awnings, External Venetians, and Retractable Roof Systems